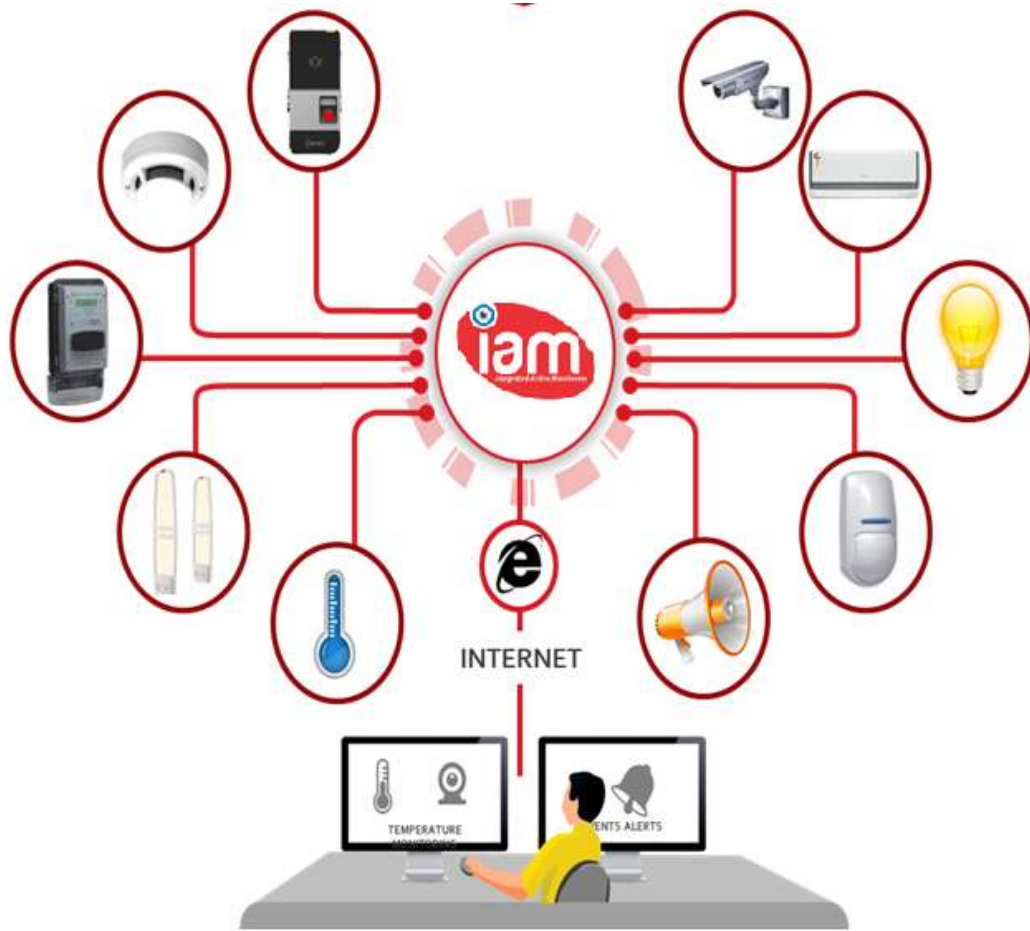




## Integrated Active Monitoring for Multilocation Facilities



- Integrated Active Monitoring (iAM) provides solution and services to make multi location offices/ premises safe , secure and efficient by using unique IoT based integrated solution with 24\*7 monitoring platform.
- iAM provides System Integration services, AMC, 24\*7 Centralized Monitoring of alert and notifications from different systems like Fire Alarm, Access Control, Biometrics, Intrusion alarm, Video Surveillance, Entrance Automation, Guard Monitoring, Environmental parameter monitoring like temperature and humidity along with Energy monitoring.
- Our integrated solutions give you the ability to design and build your security and safety systems which works 24\*7 and cost optimized and easy to use.
- Our solution improves operational efficiency by energy monitoring and video analytics.

## **Safety:**

Fire alarm monitoring

## **Security:**

CCTV, Intrusion Alarm, Biometrics /OTP Access control

## **Operational Efficiency :**

Energy, Temperature monitoring, House keeping and Automation.

Solutions for Banks

The Integrated ATM Alarm Panel  
with Centralised Monitoring Software



## Hardware At ATM /Branches

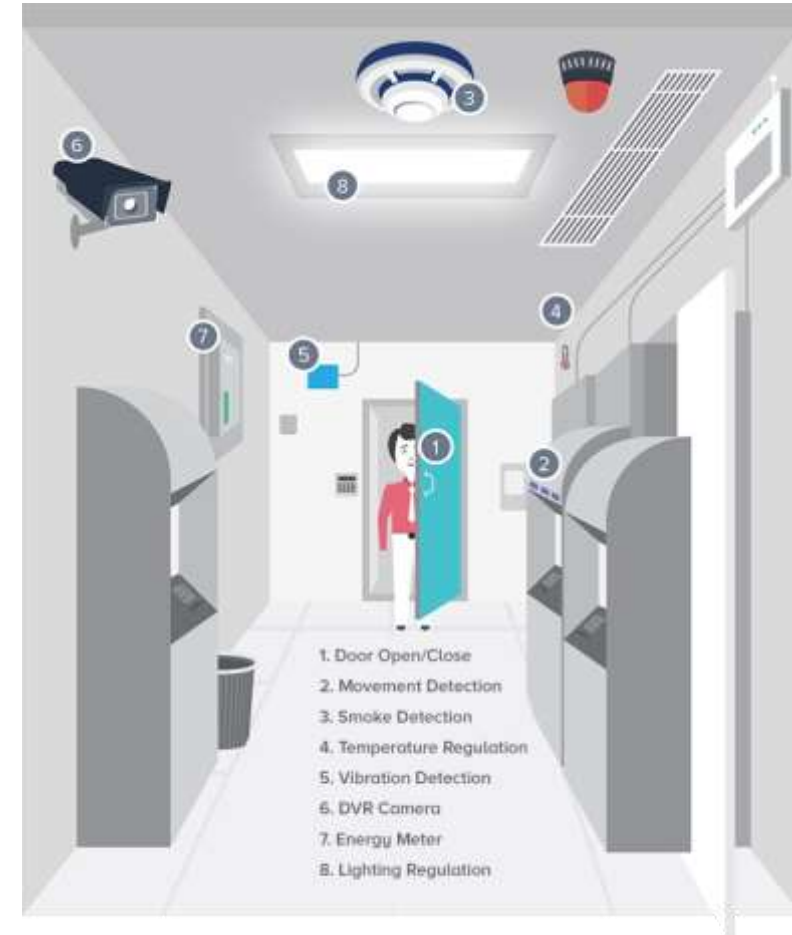
- Signage Control
- Light Control
- Temperature Monitoring
- Energy Monitoring
- Audible Alarm
- Panic Switch
- Event Image Capturing
- Removal Switch
- Glass Break Sensor
- Motion Sensor
- Attendance Device
- Smoke Detector

VPN Connection creates a secure "tunnel" through the internet

## IAM Centralised Monitoring Station & Notification on Alert

- Online Report Generation
- Web login available
- Email/SMS Alerts
- QRT: Police
- QRT: FIRE dept.

- Monitoring of Different Inputs in ATM such removal sensors, panic switch, smoke detector as to avoid theft of Cash and provide adequate safety to Customers i.e ATM users..
- Attendance for Guard, House Keeping, CRA (Cash Replacement Agency) Attendance - using Biometric / Card system
- CCTV event based image capturing for easy first level investigation and Recording for evidences.
- OTP (One Time Password ) based Access control of Back Room Door used for ATM Utility Equipment storage
- HVAC Power / Energy monitoring for power saving
- Control of signage , Lobby Light with auto scheduling as well as manual control from CMS
- ATM Lobby Temperature monitoring for comfort and energy saving
- Centralized monitoring and control/ configuration for Total Control on ATM infrastructure from Security perspective.
- Centralized monitoring required for work flow management viz Alert Management, Vendor management; ticket management, Meaningful MIS report



Removal Sensor – ATM, UPS, Cheque Drop Box, Air Conditioner

Vibration Sensor – To avoid ATM machine tampering

Door Open Sensor – ATM Back Room, ATM front Door

Panic / Duress Button (At Back room)

Smoke Detector – For fire alarm

Alarm panel tamper & Alarm panel Enclosure Tamper

Glass Break Detector

Motion/ Occupancy Sensor

Power Input – Mains Input (ON / OFF), Panel Battery Low.

Power Output - UPS Output (ON / OFF)

Monitoring of environment/ Analog inputs like Temperature and Humidity.

Monitoring of AC power.





# Monitoring Panel –Outputs

Hooter to alert Guard

Network switch restart.

Access Door Open for front and rear door

Door open for Cheque Drop box

Door Open for ATM Cash deposit

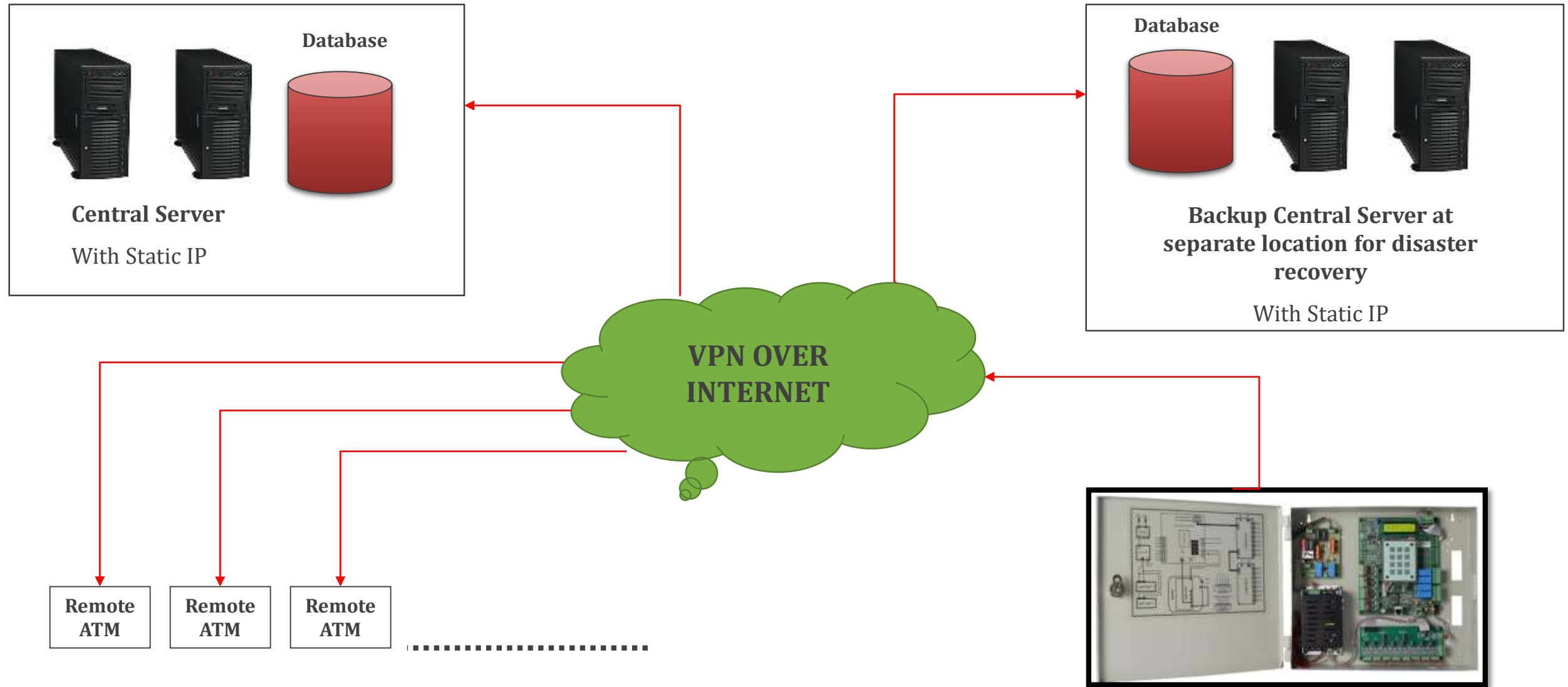
AC Power control

Light control

Buzzer for Door open too long

CCTV Event based image capture and motion based storage





- Windows based desktop GUI
- Graphical and Text based alert on CMS screen
- Grid view of recent alerts with priority based sorting
- Map based bird view for high-level alert notification
- Alarm workflow management for Ack/ Reset of alarms
- Grouping of ATM in different zones for easy management
- ATM with different identification like Panel ID/ Serial No/ Location ID/ City ID etc
- Controlling and configuring different functions of ATM panel like
  - Hooter/ Light / Output Control
  - Setting of Panel
- Desktop based GUI for immediate alert management
- Integration with CCTV GUI/ API to show DVR/IP Camera streaming video
- Web based interface for workflow/ Report/ Third party login/ Bank login

## Alert and Integration

- Sending SMS / Email to pre-decided persons
- Activating CCTV screen if any integration. Or send / call CCTV API to show video
- Message queue (MS MQ) based queuing for integration with other systems for Alerts
- Sending Alerts to third party vendors

## Work flow management

- Storing of event for further processing
- Generating workflow request so that all required process are followed
- Event acknowledged and then reset
- Investigation report
- Info sent to concerned person
- Generation of different reports on daily/weekly/ monthly basis

## Vendor Management

- Vendor management ( Maintenance/ Housekeeping/ Security)
- Vendor workflow management ( Addition/ Approval/ Rejection etc..)

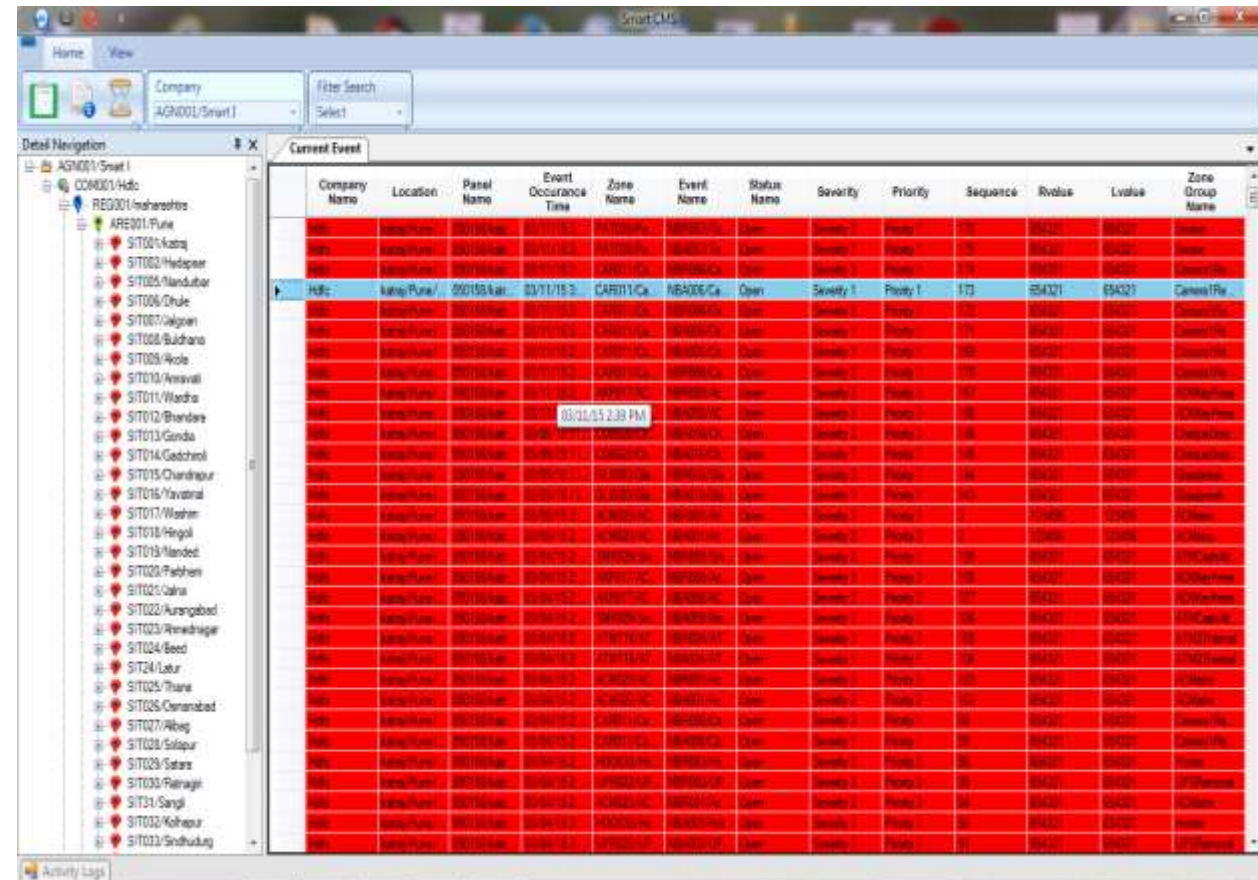
## Ticket / issue Management

- Ticket generation and ticket workflow management.
- Web based access to Bank person for looking different ticket data work flow/ action reports.
- Ticket closure approval cycle.
- Possible to send email and SMS on ticket management

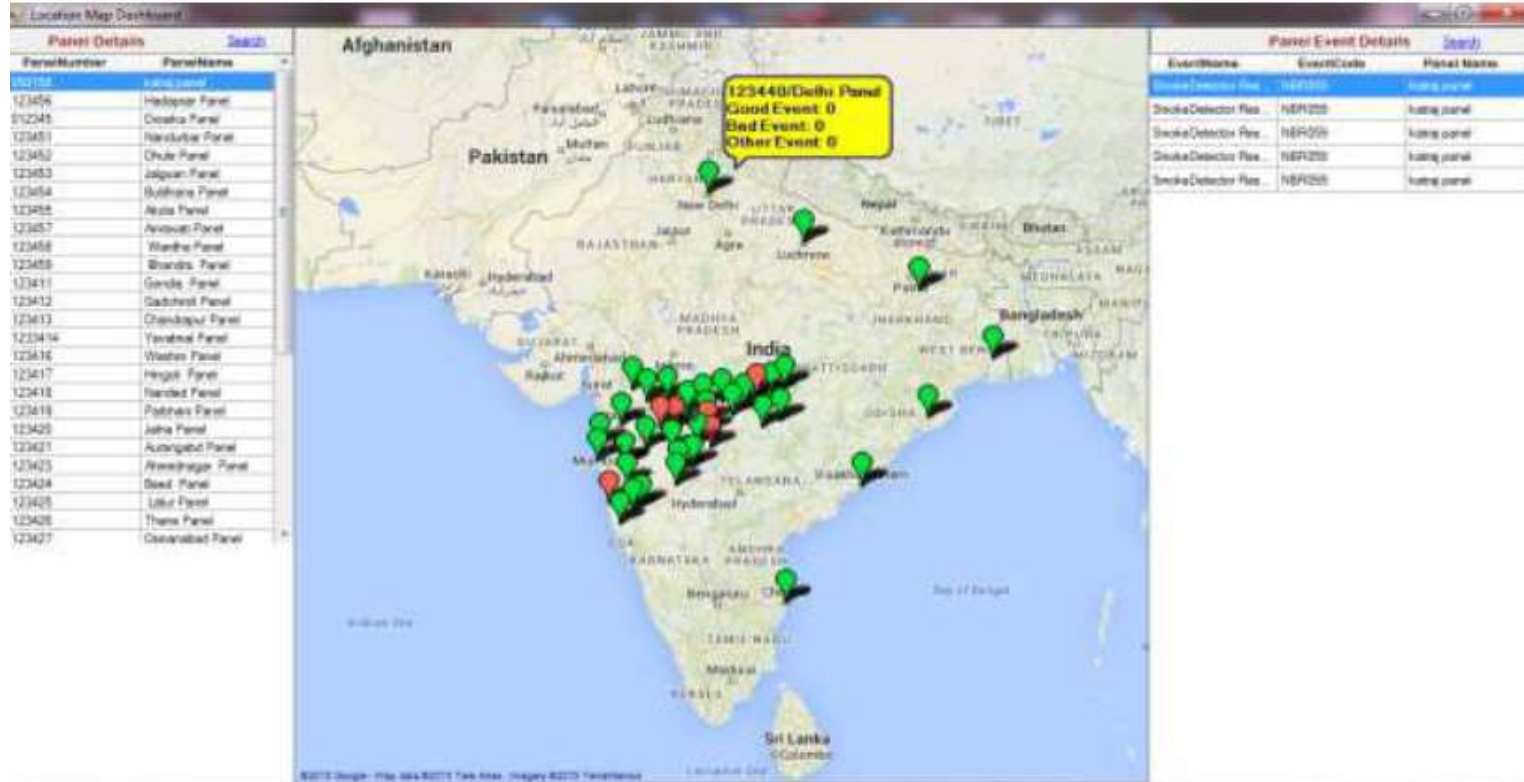
## CCTV integration

- Possible to integrate with video management system

- Monitoring Agents have role based access and can see its respective Detail Navigation, Current Event, Activity log,
- Events status, acknowledgement, has different color codes. E.g. Red Color for New event, Yellow color for Acknowledge event, Green color for Reset
- Map shows all Panel Location with Event Status
- Alert event and info event shown on Map in Pop-up window
- Acknowledgement for Tickets received is possible
- Screen shot facility while Video streaming/monitoring
- Single window & Multiple window camera view
- Monthly/weekly/day wise reports are available
- In Action plan we can track all details about Vendors/users

| Company Name | Location | Panel Name | Event Occurrence Time | Zone Name | Event Name | Status | Severity   | Priority   | Sequence | Rvalue | Lvalue | Zone Group Name |
|--------------|----------|------------|-----------------------|-----------|------------|--------|------------|------------|----------|--------|--------|-----------------|
| ...          | ...      | ...        | ...                   | ...       | ...        | Open   | Severity 1 | Priority 1 | 173      | 554321 | 554321 | Camera/Fire     |
| ...          | ...      | ...        | ...                   | ...       | ...        | Open   | Severity 1 | Priority 1 | 174      | 554321 | 554321 | Camera/Fire     |
| ...          | ...      | ...        | ...                   | ...       | ...        | Open   | Severity 1 | Priority 1 | 175      | 554321 | 554321 | Camera/Fire     |
| ...          | ...      | ...        | ...                   | ...       | ...        | Open   | Severity 1 | Priority 1 | 176      | 554321 | 554321 | Camera/Fire     |
| ...          | ...      | ...        | ...                   | ...       | ...        | Open   | Severity 1 | Priority 1 | 177      | 554321 | 554321 | Camera/Fire     |
| ...          | ...      | ...        | ...                   | ...       | ...        | Open   | Severity 1 | Priority 1 | 178      | 554321 | 554321 | Camera/Fire     |
| ...          | ...      | ...        | ...                   | ...       | ...        | Open   | Severity 1 | Priority 1 | 179      | 554321 | 554321 | Camera/Fire     |
| ...          | ...      | ...        | ...                   | ...       | ...        | Open   | Severity 1 | Priority 1 | 180      | 554321 | 554321 | Camera/Fire     |
| ...          | ...      | ...        | ...                   | ...       | ...        | Open   | Severity 1 | Priority 1 | 181      | 554321 | 554321 | Camera/Fire     |
| ...          | ...      | ...        | ...                   | ...       | ...        | Open   | Severity 1 | Priority 1 | 182      | 554321 | 554321 | Camera/Fire     |
| ...          | ...      | ...        | ...                   | ...       | ...        | Open   | Severity 1 | Priority 1 | 183      | 554321 | 554321 | Camera/Fire     |
| ...          | ...      | ...        | ...                   | ...       | ...        | Open   | Severity 1 | Priority 1 | 184      | 554321 | 554321 | Camera/Fire     |
| ...          | ...      | ...        | ...                   | ...       | ...        | Open   | Severity 1 | Priority 1 | 185      | 554321 | 554321 | Camera/Fire     |
| ...          | ...      | ...        | ...                   | ...       | ...        | Open   | Severity 1 | Priority 1 | 186      | 554321 | 554321 | Camera/Fire     |
| ...          | ...      | ...        | ...                   | ...       | ...        | Open   | Severity 1 | Priority 1 | 187      | 554321 | 554321 | Camera/Fire     |
| ...          | ...      | ...        | ...                   | ...       | ...        | Open   | Severity 1 | Priority 1 | 188      | 554321 | 554321 | Camera/Fire     |
| ...          | ...      | ...        | ...                   | ...       | ...        | Open   | Severity 1 | Priority 1 | 189      | 554321 | 554321 | Camera/Fire     |
| ...          | ...      | ...        | ...                   | ...       | ...        | Open   | Severity 1 | Priority 1 | 190      | 554321 | 554321 | Camera/Fire     |
| ...          | ...      | ...        | ...                   | ...       | ...        | Open   | Severity 1 | Priority 1 | 191      | 554321 | 554321 | Camera/Fire     |
| ...          | ...      | ...        | ...                   | ...       | ...        | Open   | Severity 1 | Priority 1 | 192      | 554321 | 554321 | Camera/Fire     |
| ...          | ...      | ...        | ...                   | ...       | ...        | Open   | Severity 1 | Priority 1 | 193      | 554321 | 554321 | Camera/Fire     |
| ...          | ...      | ...        | ...                   | ...       | ...        | Open   | Severity 1 | Priority 1 | 194      | 554321 | 554321 | Camera/Fire     |
| ...          | ...      | ...        | ...                   | ...       | ...        | Open   | Severity 1 | Priority 1 | 195      | 554321 | 554321 | Camera/Fire     |
| ...          | ...      | ...        | ...                   | ...       | ...        | Open   | Severity 1 | Priority 1 | 196      | 554321 | 554321 | Camera/Fire     |
| ...          | ...      | ...        | ...                   | ...       | ...        | Open   | Severity 1 | Priority 1 | 197      | 554321 | 554321 | Camera/Fire     |
| ...          | ...      | ...        | ...                   | ...       | ...        | Open   | Severity 1 | Priority 1 | 198      | 554321 | 554321 | Camera/Fire     |
| ...          | ...      | ...        | ...                   | ...       | ...        | Open   | Severity 1 | Priority 1 | 199      | 554321 | 554321 | Camera/Fire     |
| ...          | ...      | ...        | ...                   | ...       | ...        | Open   | Severity 1 | Priority 1 | 200      | 554321 | 554321 | Camera/Fire     |



Google map view to see status of alarms at each location

Instant camera view






- Health data updated every 15 minutes
- Dashboard to show health on monthly and daily basis.
- Ensured system and up and running and actions are taken.

**Monthly HeartBeat Report** Select Export Search

| PanelName                                     | 1  | 2  | 3  | 4  | 5  | 6  | 7  | 8  | 9  | 10 | 11 | 12 | 13 | 14 |
|---|----|----|----|----|----|----|----|----|----|----|----|----|----|----|
| GTL/GTLWANWARI ( HB Dur :30)                  | 19 | 7  | 24 | 24 | 24 | 24 | 24 | 24 | 24 | 24 | 24 | 24 | 24 | 13 |
| GTL/GTL AFJAL1 KALYAN PHATA ( HB Dur :15)     | 24 | 24 | 24 | 24 | 24 | 24 | 24 | 24 | 24 | 24 | 24 | 24 | 24 | 13 |
| GTL/GTL - Server Room Hinjewadi ( HB Dur :15) | 24 | 24 | 24 | 24 | 24 | 24 | 24 | 24 | 24 | 24 | 24 | 24 | 24 | 13 |
| GTL/Kiwale Dehu Road ( HB Dur :15)            | 0  | 0  | 0  | 0  | 0  | 0  | 0  | 0  | 0  | 0  | 0  | 0  | 13 | 13 |
| GTL/GTL Morwadi ( HB Dur :15)                 | 0  | 0  | 13 | 24 | 24 | 24 | 24 | 24 | 24 | 24 | 24 | 24 | 20 | 12 |
| GTL/GTL-Loni Toll Naka ( HB Dur :15)          | 23 | 24 | 24 | 24 | 24 | 24 | 24 | 24 | 24 | 24 | 24 | 24 | 24 | 13 |

**Hourly HeartBeat Report** Select Export Search

| PanelName                                     | 00 | 01 | 02 | 03 | 04 | 05 | 06 | 07 | 08 | 09 | 10 | 11 | 12 |
|---|----|----|----|----|----|----|----|----|----|----|----|----|----|
| GTL/GTLWANWARI ( HB Dur :30)                  | 10 | 12 | 11 | 11 | 11 | 11 | 11 | 10 | 11 | 11 | 12 | 10 | 7  |
| GTL/GTL - Server Room Hinjewadi ( HB Dur :15) | 11 | 11 | 11 | 11 | 12 | 11 | 12 | 11 | 9  | 12 | 11 | 12 | 7  |
| GTL/GTL Morwadi ( HB Dur :15)                 | 0  | 4  | 12 | 11 | 11 | 12 | 11 | 12 | 11 | 11 | 12 | 11 | 7  |
| GTL/GTL-Loni Toll Naka ( HB Dur :15)          | 11 | 12 | 8  | 11 | 12 | 11 | 11 | 12 | 11 | 12 | 11 | 11 | 8  |
| GTL/GTL AFJAL1 KALYAN PHATA ( HB Dur :15)     | 12 | 11 | 12 | 11 | 12 | 11 | 12 | 11 | 11 | 12 | 11 | 11 | 8  |
| GTL/Kiwale Dehu Road ( HB Dur :15)            | 11 | 11 | 12 | 11 | 12 | 11 | 11 | 12 | 11 | 12 | 11 | 11 | 6  |

| Panel Images Details                         |                     |                     |                     | Export   | Search |
|--|---------------------|---------------------|---------------------|--|--------|
| 20   | Records             |                     |                     | Search   |        |
| 140028/PAN028<br>/Shapoorji                  | 14-12-2017 12:00:01 | 14-12-2017 12:00:01 | 140028_CHB001_14121 |   |        |
| 140006/PAN006<br>/Ascott Hotel               | 14-12-2017 12:00:01 | 14-12-2017 12:00:01 | 140006_CHB001_14121 |   |        |
| 140006/PAN006<br>/Ascott Hotel               | 14-12-2017 12:00:01 | 14-12-2017 12:00:01 | 140006_CHB001_14121 |   |        |
| 140028/PAN028<br>/Shapoorji                  | 14-12-2017 12:00:01 | 14-12-2017 12:00:01 | 140028_CHB001_14121 |   |        |
| 140002/PAN002<br>/Durga Mata Mandir<br>Panel | 14-12-2017 12:00:01 | 14-12-2017 12:00:01 | 140002_CHB001_14121 |  |        |



- Hourly camera health check using image capture.

- Event based image capture



## CCTV MONITORING SYSTEM:

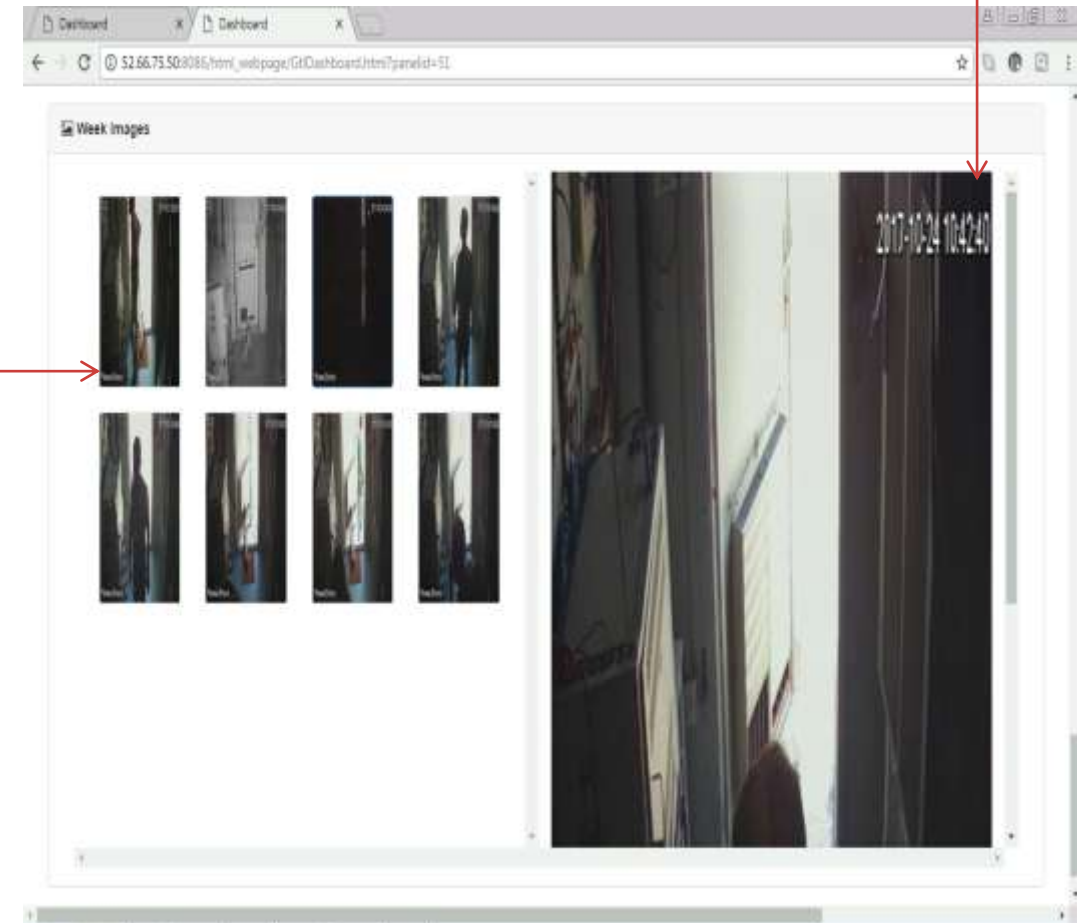
### BENEFITS OF CCTV MONITORING

- OUR INTGERATION SOLUTION PROVIDES EVENT BASED IMAGE CAPTURE
- DAILY CCTV HEALTH CHECK
- VIDEO LOSS ALERTS
- DVR/NVR HEALTH STATUS AND CHECK
- HDD STORAGE OR FULL STATUS AND HEALTH CHECK

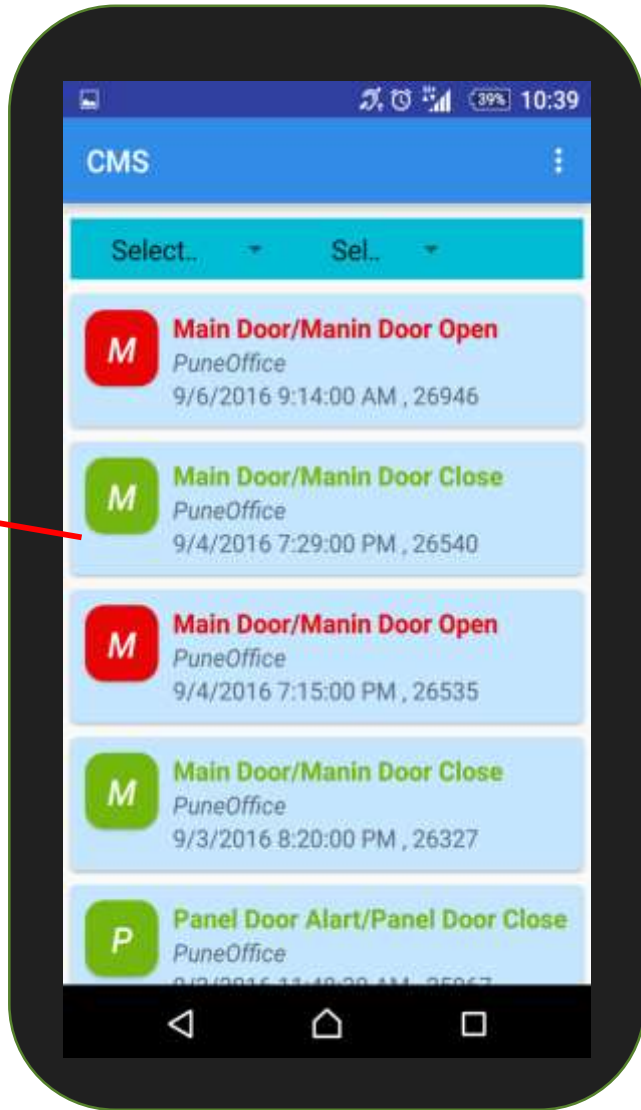


IMAGES:  
EVENT BASED IMAGE

IMAGES WITH SITE  
NAME, DATE & TIME

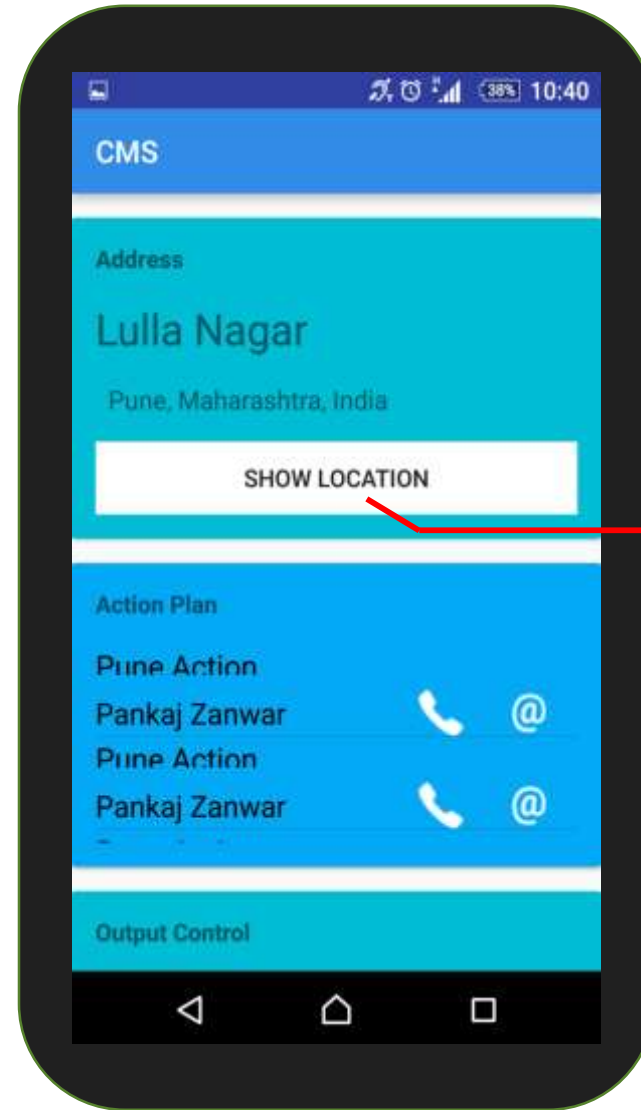


## Events / logs list



List view of events  
Events along with the  
time and date are  
displayed in list  
form

## Details of Site

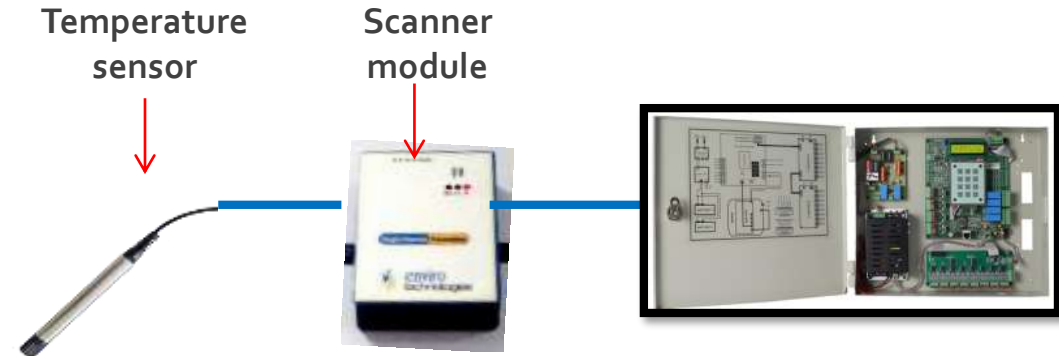
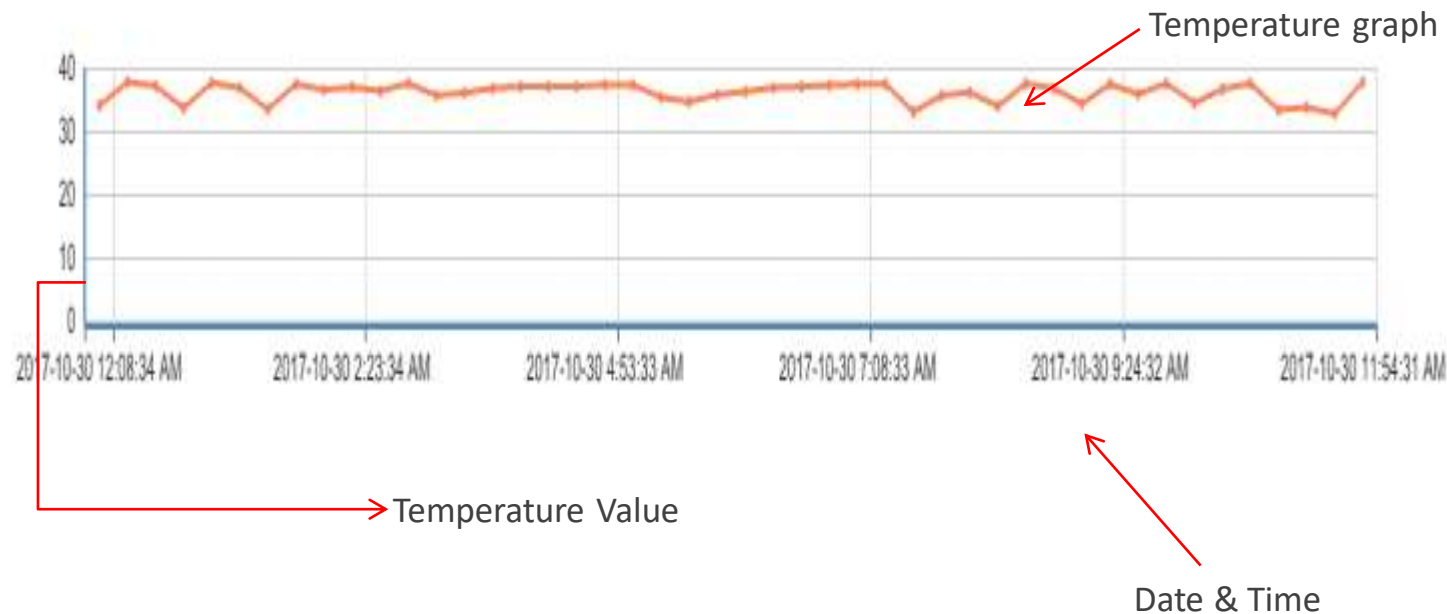


Address & site Location  
Details of Site like  
location as well as  
action plan is available

## TEMPERATURE MONITORING SYSTEM:

### Temperature Graph:

- ✓ This graph shows hourly/Daily temperature consumption
- ✓ High Temp. Avg. Tem & Low Temp figures per day
- ✓ Temperature value with Date and Time



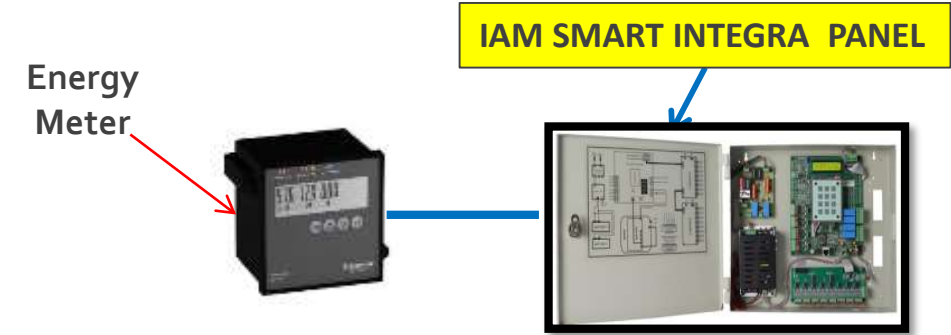
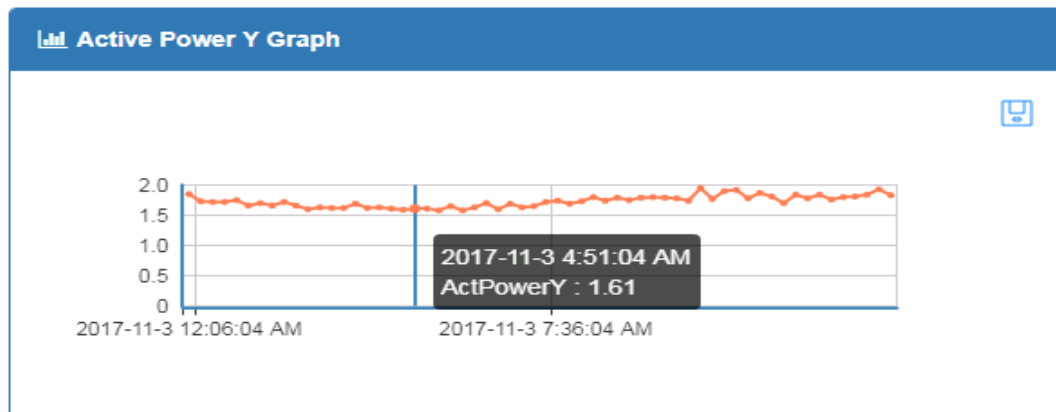
### BENEFITS OF TEMPERATURE MONITORING

- ❑ REAL TIME ENERGY CONSUMPTION DATA,
- ❑ MOST OF THE TIME THE AIR CONDITIONERS ARE ON AFTER SHOP IS CLOSED, IAM MONITORING SERVICES WILL ALERT YOU IMMEDIATELY BY A CALL TO THE SECURITY PERSON
- ❑ THIS MAKES YOU EASY TO AVOID EXCESS USAGES OF AIR CONDITIONERS

## ENERGY MONITORING SYSTEM:

### Energy monitoring:

- ✓ Alerts with email/sms is sent o the authorized person
- ✓ Energy Graph: Active power R/Y/B graph and data
- ✓ Energy consumption data in tabular format
- ✓ Zone details: like active zone
- ✓ Bar graph for Events
- ✓ Last 20 transaction

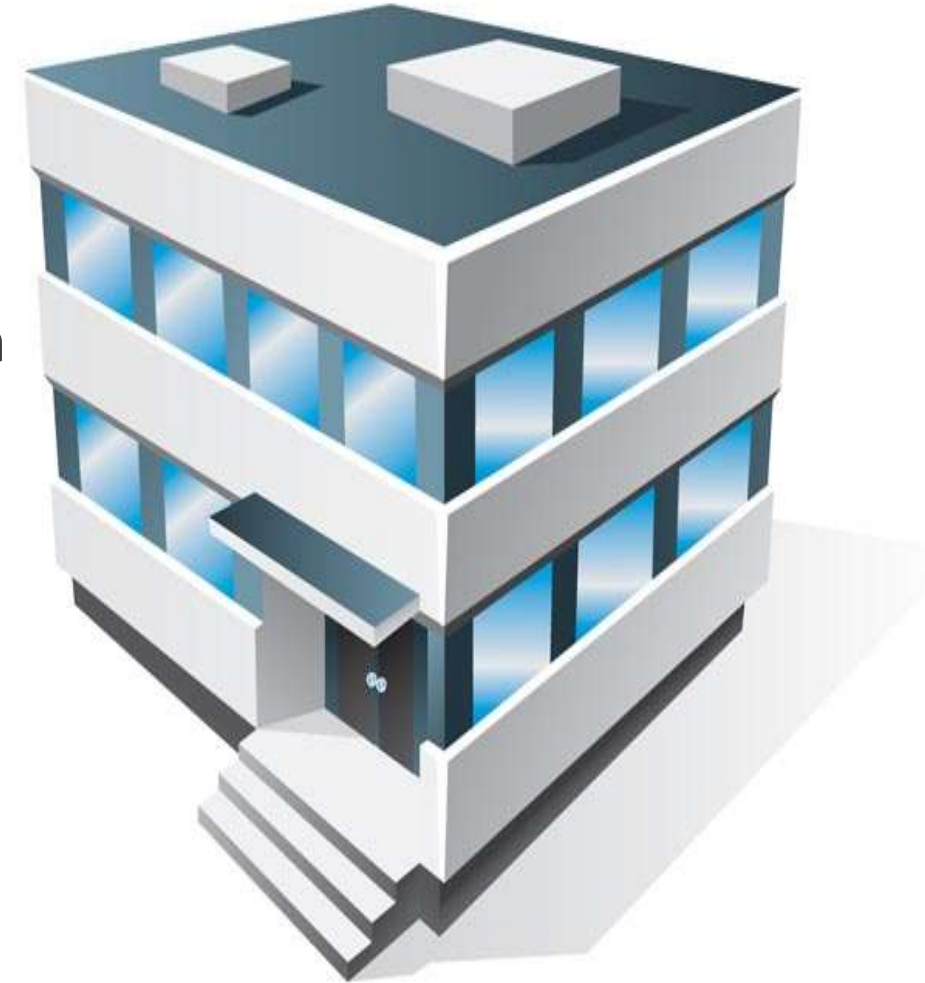


### BENEFITS OF ENERGY MONITORING

- ❑ **SAVE MONEY:** EMPLOYING A TEMPERATURE MONITORING SYSTEM WILL SAVE YOU MONEY
- ❑ **CONTROL YOUR ELECTRICITY BILLS:** KNOW THE CONSUMPTION ON YOUR BILL, CONTROL THE DEMAND AND OBTAIN ADDITIONAL INFORMATION; DAILY ENERGY USAGES DATA AVAILABLE WITH EVERY HOUR CONSUMPTION

## Facility and Space

- Strategic Location in Metro & Techno savvy city like Pune.
- Complete independent multi-storied facility
- 2,500 Sq. ft. + well equipped advanced monitoring station
- Supported by additional 2,500 Sq. ft. + in-house R&D and Software development center
- Upgraded and latest IT infrastructure
- Three layered Power Management (MSEB, UPS, DG Set )



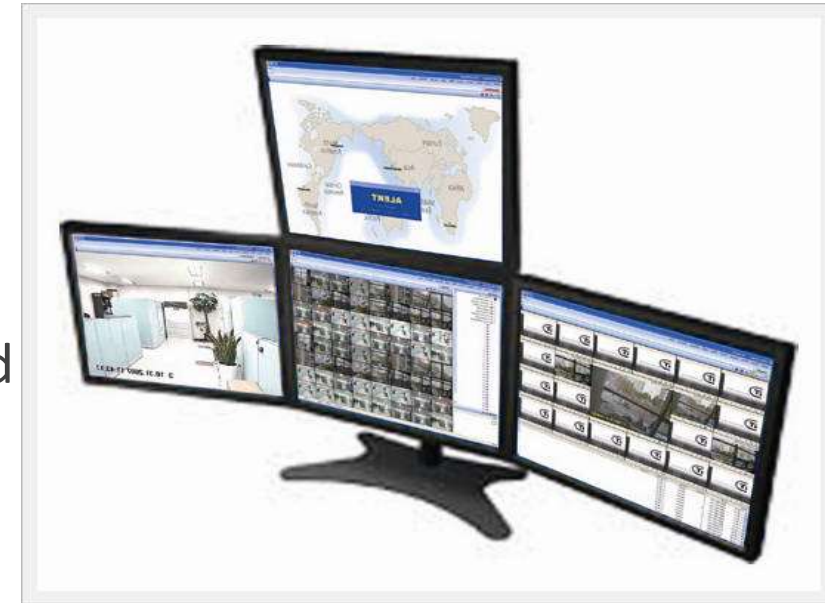
## Network + Server Room

- Strong Local Area Network
- Network security precautions with Firewalls.
- Primary & Secondary Server with Redundancy mode ensuring that there will be no down-time when primary server fails and secondary takes over.
- Adequate Bandwidth
- Data on Highly redundant NAS (Network Attached Storage)
- Multiple VPN Network provider with fail-safe & Auto-Switch Over
- Best Practices for data center monitoring and server room monitoring have been taken care of.

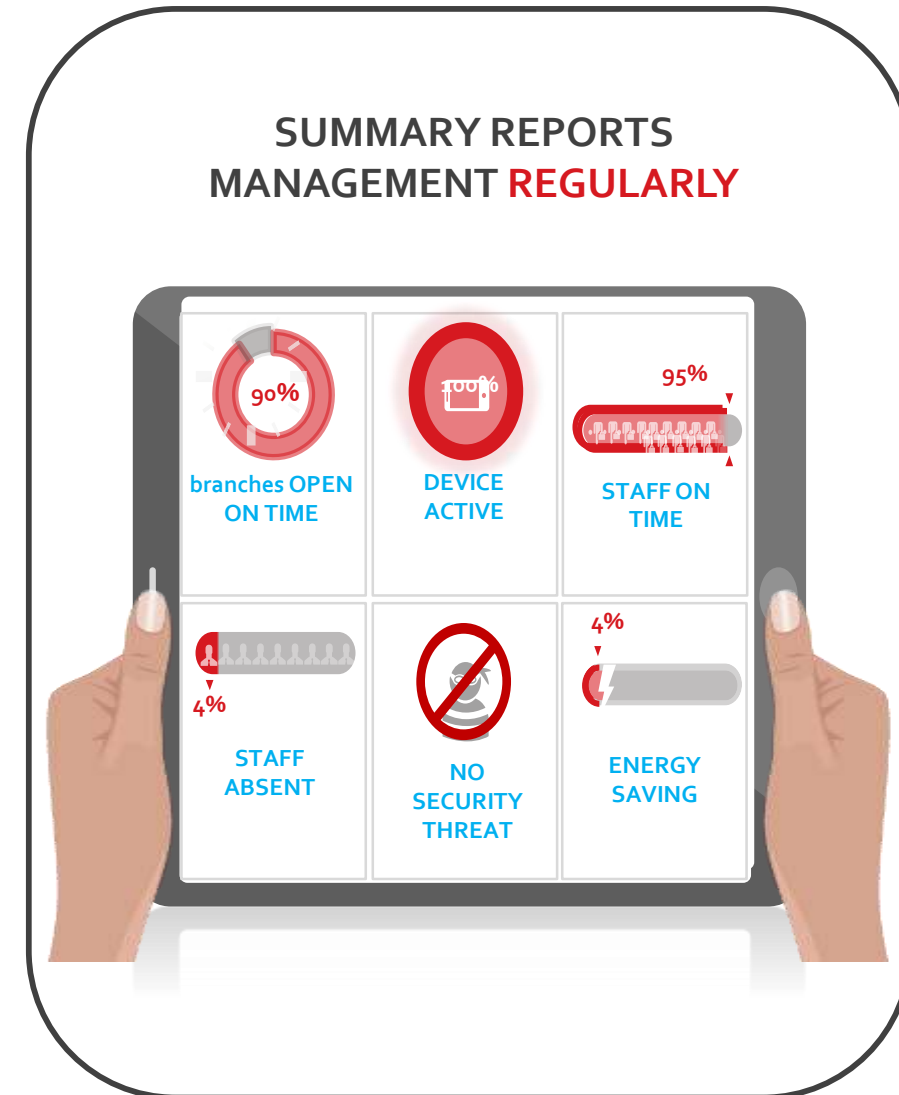


## 24 x 7 Monitoring Station

- Three+ monitors for each of the operator enabling quick response in event of Alarms.
- Call flow distribution facility within the operators
- Ample manpower against the count of the sites to be monitored
- Multi locational site allocation by Area, Regions etc.
- Round the clock monitoring activities for prompt response and closure of the Alarm events with desired response matrix and SOP defined.

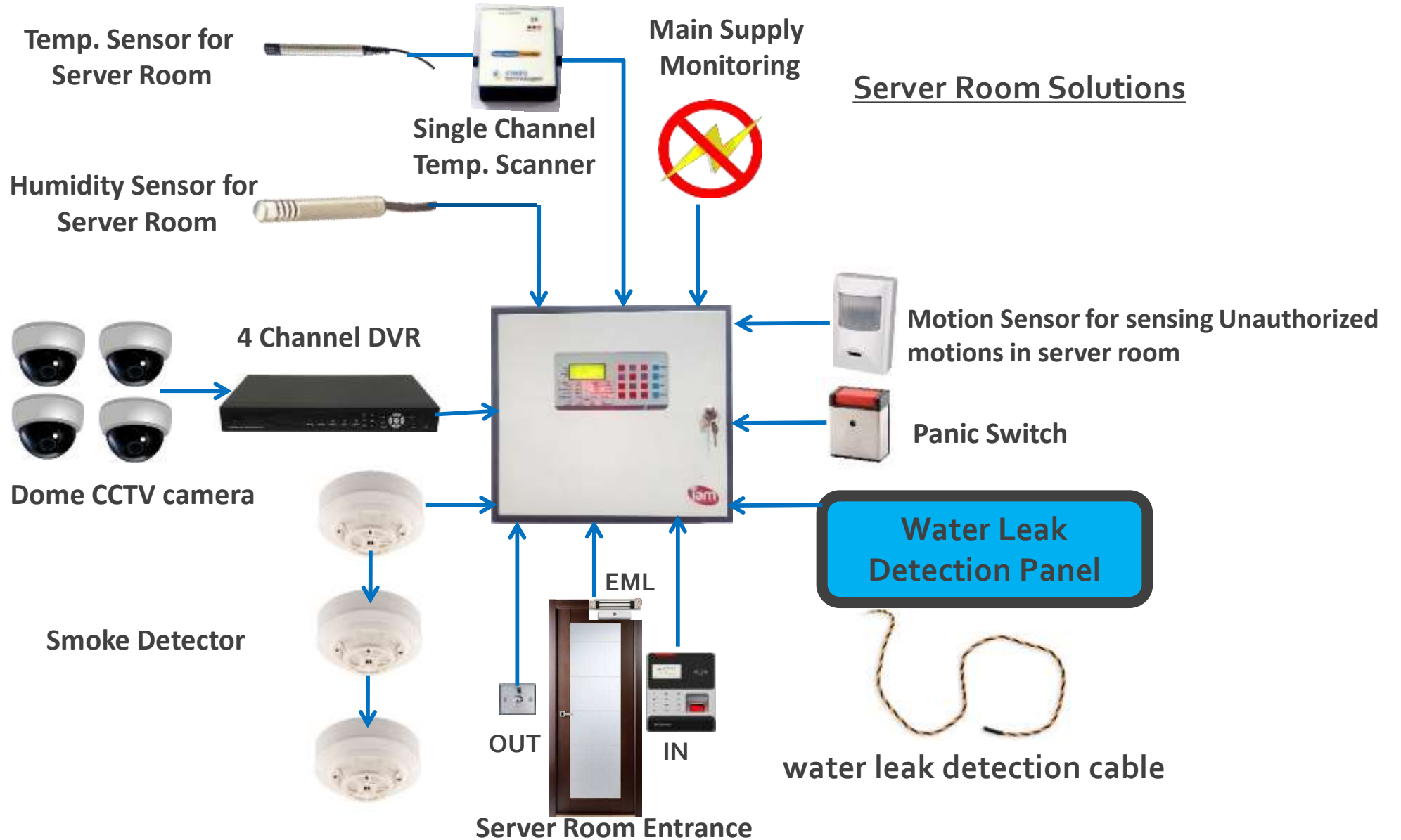


- Get data of all Branches and their Working status.
- Power Failure Update at different locations
- Alerts immediately in any Emergency cases such as Fire, Theft etc.
- Branches Open & Close status and time
- Easy to analyze the Power Consumption of diff branches.
- Possible to keep a tap on attendance
- Device active status of diff branches
- Vendor management ( Maintenance/ Housekeeping / Security) i.e. Sending Alerts to third party vendors
- Web based access to Admin for looking different ticket data work flow/ action reports of respective sites.





# Datacenters and currency chest monitoring



Wireless Sensor Available in Market:

**PIR Motion Sensor**  
(Up to 2Years)



**Magnetic Contact**  
(Up to 2 Years )



**Panic Switch**  
(Up to 2 Years )



**Smoke Detector**  
(Up to 2 Years )



**Glass Break Detector**  
(Up to 2 Years )



Following Sensors we need to use Wired Only as Wireless is not available

- Heavy Duty Magnetic Contact
- Vibration Sensor
- Hooter

# Power Source monitoring

Power source monitoring helps us to increase power availability.

- Row power source
- UPS Power availability
- DG Power

Time stamped Events generated when power switchover happens.  
Know DG On time in day/ week/ Month



AC Power



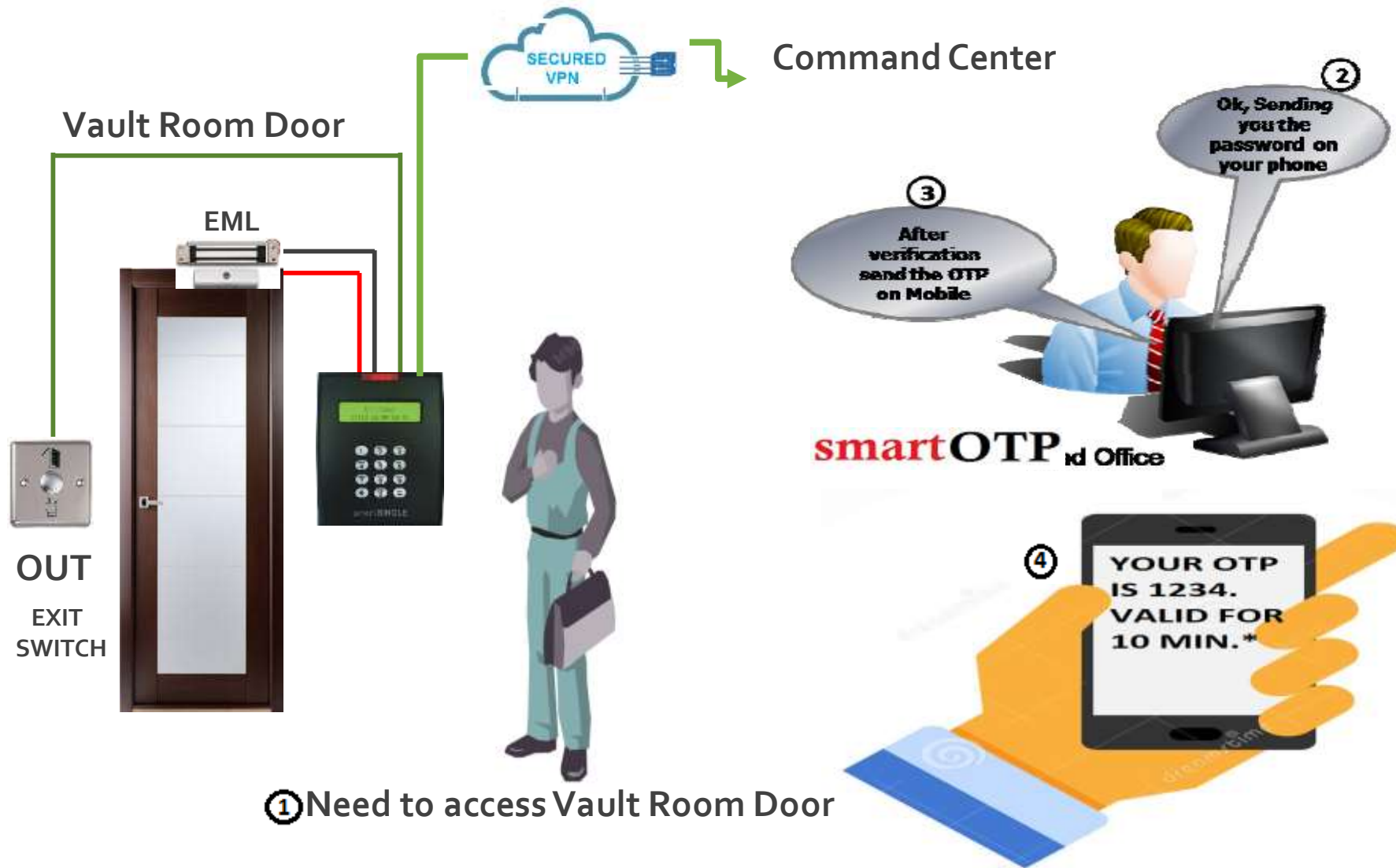
UPS



Diesel Generator



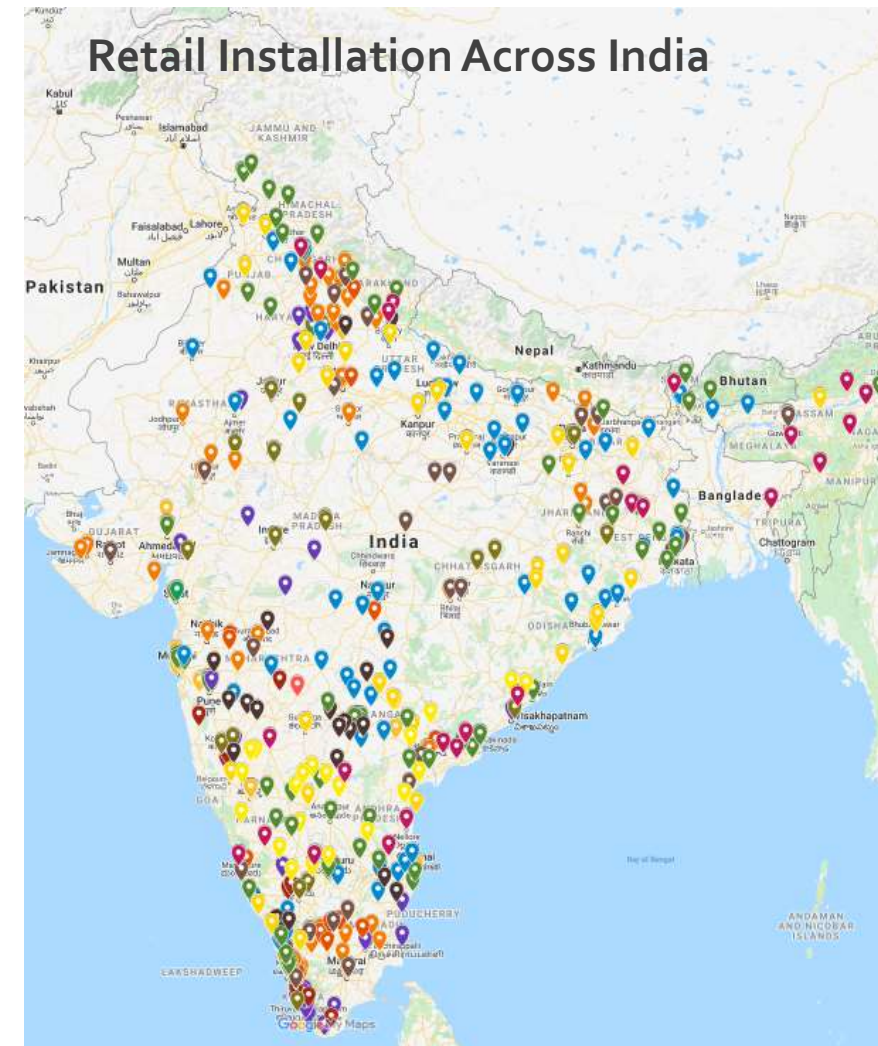
Solar Power





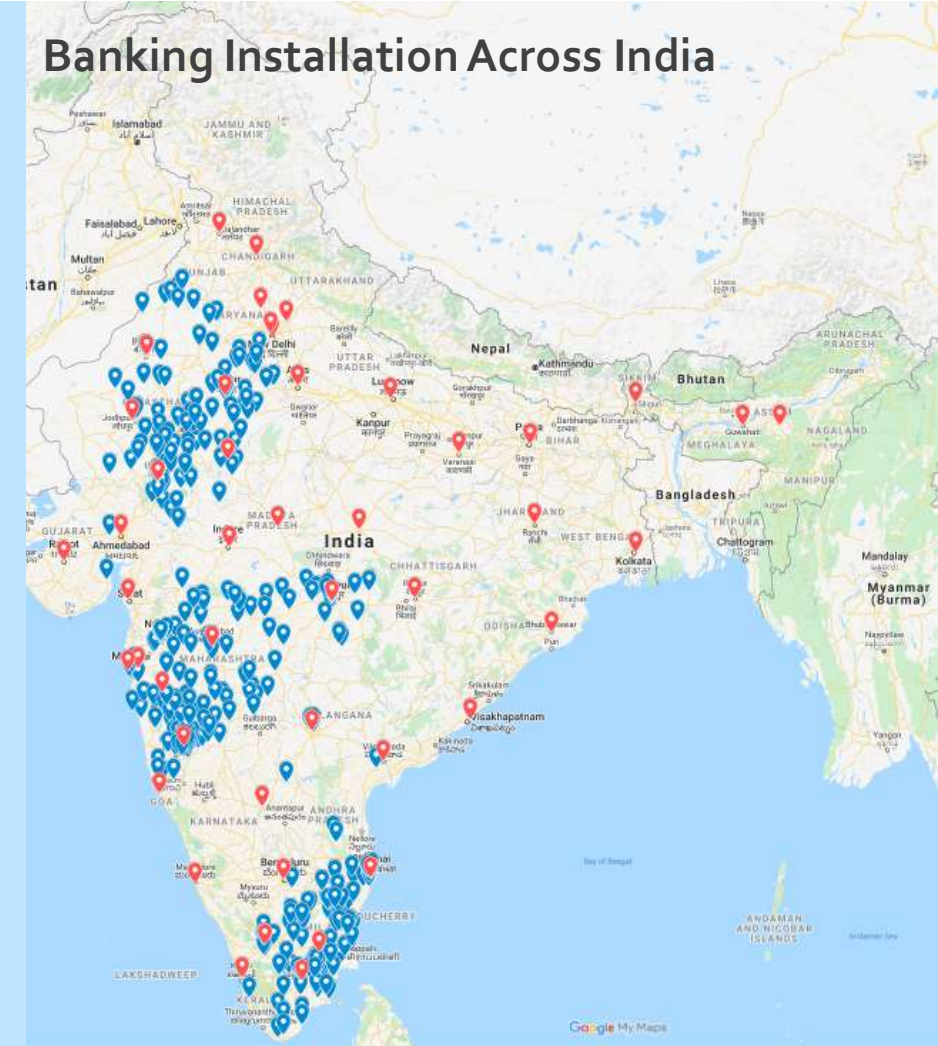
- Dual Authentication : To open the safe, the two locks are to be opened first, with their keys A & B. Thereafter two authorized users have to place their fingers on the Reader one after the other. Only then does the safe door open
- Duress Alert : If an unauthorized person forces an authorized person to open the doors, say at gun point, the latter can place one of his other fingers, designated as a duress finger on the Reader.  
This action will open the door but at the same time send a silent alarm through the GSM Dialer to the Admin/ Security person to initiate an emergency response.
- Power Fail & Low Bat Alert : An Alert is sent by SMS through the GSM Dialer to admin for power management/arrangement in a Power Fail or Low-Battery situation to ensure uninterrupted security.
- Store Logs For Security Audit : Store all the transaction logs for any future Security Audits.
- Door Left Unlocked Alarm : BIOsafe gives an immediate alert / beep if either Lock A or Lock B is not closed.

## Retail Installation Across India



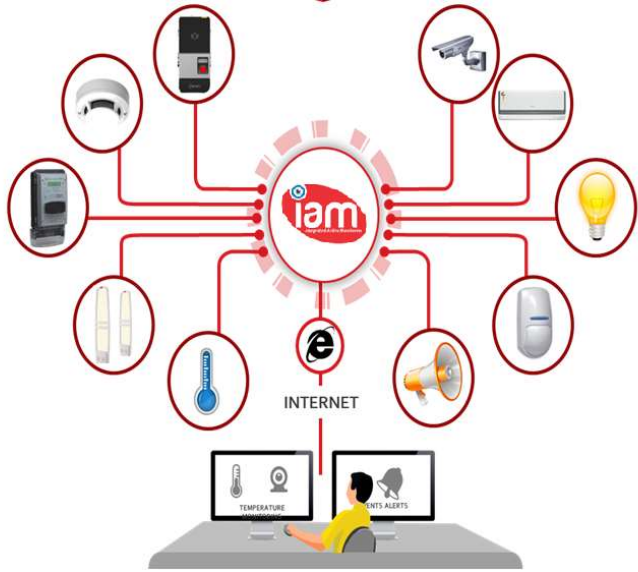
- Design, Procure, Supply, Install and Service support
- Dedicated Project Management Team.
- Own employee for supervision across all Metro in India.
- 100+ Trained vendors across India.
- 24x7 Project management support.
- Centrally Managed Installation Operations.
- Full Documentation for Installation and AMC.
- Close communication with Customer for Planning and deployment.
- End to end Management of Project.
- Closely work with OEM to get product modified as per customer need.
- Physical and remote Site survey for BOQ.
- Daily / Weekly work progress Management reporting.
- 24x7 remote monitoring of equipment and alerts.

## Banking Installation Across India



Committed to Make Multi Location Office Safe, Secure and Efficient Using IoT Technologies.

**I**ntegrated **A**ctive **M**onitoring



- iAM provides solution and services to make multi location offices/ premises safe , secure and efficient by using unique IoT based integrated solution with 24\*7 remote cloud hosted monitoring platform.
- Specialized in design, development and deployment of Retail automation technologies across PAN India.
- State of art 24x7 Command and control in Pune to monitor more than 10000+ sites
- Supplied and installed more than 15000+ IoT panels for Bank branch, ATM , 1500+ People Counting in Retail stores, 400+ energy management solutions across PAN India.
- Solution provider for multi location offices - Retail stores, Bank, Warehouses, Quick service restaurants, Cloud kitchen.
- PAN India presence with trained engineer for solution deployment.

Employee : 120+  
 Presence : PAN India  
 An ISO 9001:2008

<https://youtu.be/Wx1pq4cSKd4>  
[https://youtu.be/uTHICR\\_Wgtg](https://youtu.be/uTHICR_Wgtg)  
[www.smartiam.in](http://www.smartiam.in)







**Pankaj Zanwar – Director**  
**[pankaj.zanwar@smartiam.in](mailto:pankaj.zanwar@smartiam.in)**  
**9890815156**  
**[www.smartiam.in](http://www.smartiam.in)**

### **Solution Video**

<https://youtu.be/Wx1pq4cSKd4>  
[https://youtu.be/uTHICR\\_W9tg](https://youtu.be/uTHICR_W9tg)

### **Session by Pankaj Zanwar at Retail Leadership Summit**

### **Energy Efficiency**

<https://www.youtube.com/watch?v=ldMtv4HMHCA>

### **Retail Automation**

<https://www.youtube.com/watch?v=wzWaicfujQA>

*Thank  
you*



***For Business Enquiries***  
***Ajay Salunkhe – BDM***  
***[Ajay.s@smartiam.in](mailto:Ajay.s@smartiam.in)***  
***7039017112 / 9819711013***